



Seaview Avenue, West Mersea, Colchester

Thoughtful design and elegant interiors are at the forefront of this exceptional holiday home located on the beautiful Mersea Island in Essex. This immaculately presented home offers stunning views, contemporary finish and a luxurious coastal retreat. Whether you are looking for a peaceful seaside hideaway or the perfect location to explore, this is your chance to own a piece of Mersea Island's allure.

Guide price £89,995

Seaview Avenue

Colchester, CO5



- 2025 & 2026 FREE Pitch Fees
- Two Bedrooms
- Double Glazing & Central Heating
- Bathroom + Separate WC
- Mersea Island

Willerby Lamberhurst 2025

Make every day feel like a holiday with the new Willerby Lamberhurst, your perfect escape throughout the owners' season at West Mersea Holiday Park. You'll be welcomed into a friendly, established community of like-minded holiday homeowners, making it a place you'll look forward to returning to again and again.

At the heart of the Lamberhurst is its beautifully designed lounge area, ideal for unwinding after a day of exploring or enjoying relaxed evenings with friends and family. The modern kitchen and open-plan dining area are perfectly suited to entertaining, combining style and practicality with plenty of space to cook, chat and connect.

The master bedroom offers a calming neutral palette and plush comfort, creating a tranquil retreat where a great night's sleep is always guaranteed. The twin bedroom is a thoughtful addition, featuring cosy beds and built-in storage, ideal for guests or younger family members.

A compact yet contemporary bathroom completes the space, finished to a high standard with all the amenities you need for comfort and convenience.

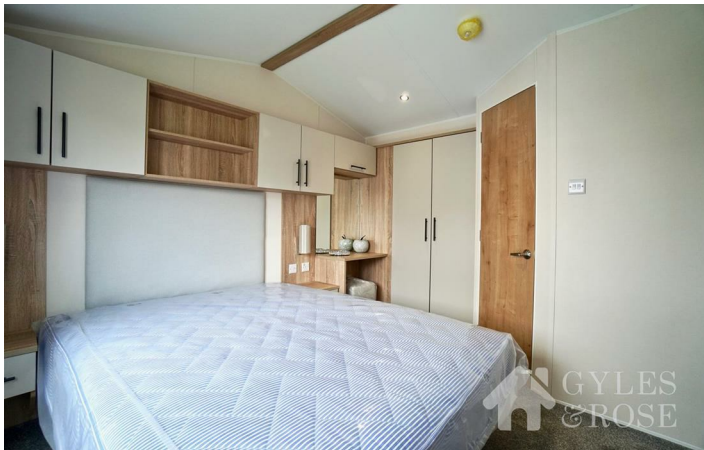
Whether you're entertaining or unwinding, the Willerby Lamberhurst is a perfect blend of practicality and luxury, ready for your next chapter by the sea.

The Area

Nestled along the scenic coastline of Essex, Mersea Island stands as a hidden gem just off the shores of Colchester. Boasting a unique blend of natural beauty and rich maritime heritage, this idyllic island offers an unparalleled escape for both locals and visitors alike. Colchester's best-kept secret, Mersea Island, invites you to discover its pristine beaches, charming villages, and delectable seafood cuisine. As a haven for outdoor enthusiasts, the island provides a myriad of recreational activities, from sailing and windsurfing to serene coastal walks. With its quaint shops, artisanal markets, and welcoming community, Mersea Island promises an authentic experience that captures the essence of seaside living. Whether seeking a peaceful retreat or an adventure-filled getaway, Mersea Island invites you to explore its unique charm, where every moment is a tide of tranquility and discovery.

Further Information

Sleeps 6
38 x 12ft
Assigned Parking
Double Glazing and Central Heating
Super Fast Internet Package
Patio Doors



Floor Plan



TOTAL FLOOR AREA : 437 sq.ft. (40.6 sq.m.) approx.

Whilst every attempt has been made to ensure the accuracy of the floorplan contained here, measurements of doors, windows, rooms and any other items are approximate and no responsibility is taken for any error, omission or mis-statement. This plan is for illustrative purposes only and should be used as such by any prospective purchaser. The services, systems and appliances shown have not been tested and no guarantee as to their operability or efficiency can be given.

Made with Metropix ©2025

These particulars, whilst believed to be accurate are set out as a general outline only for guidance and do not constitute any part of an offer or contract. Intending purchasers should not rely on them as statements of representation of fact, but must satisfy themselves by inspection or otherwise as to their accuracy. No person in this firms employment has the authority to make or give any representation or warranty in respect of the property.

